

# CALJAN CURVETRACK

## BELT CURVE CONVEYOR

### Unique design

A unique belt control system locks the belt into place ensuring precise belt movement. The lightweight aluminium construction reduces noise level to a minimum.

### Maximum flexibility

Framework of multi-functional aluminium profiles enables supports, sidewalls, light barriers, etc. to be attached as required.

### Limited downtime

The belt can be removed quickly and simply with minimal tools, enabling rapid cleaning and maintenance.

### Easy to integrate

Made to order, Caljan CurveTrack conveyors can be adapted to suit virtually any existing layout.



## CALJAN CURVETRACK IS DESIGNED TO QUICKLY MOVE UNIT LOADS THROUGH CURVES TO THE NEXT CONVEYOR

Caljan CurveTrack belt conveyors are modular, providing maximum flexibility, reliability and require very little maintenance. Moving units up to 4 meters/second, high capacity is maintained - even through sharp curves.



### **Quality**

Unique belt control ensures precise, controlled belt movement, even at high speeds. The item is transferred in the correct position to the next conveyor. Each curve is tested at the factory prior to shipment.



### **Safety**

Caljan CurveTracks are designed with covers and finger guards, naturally fitted where appropriate. Available options include steel underguarding placed beneath the curve prevents bodily contact.



### **Service**

These strong belt curves require very little maintenance. The belt itself can be removed without using tools, reducing down-time to just a few minutes.

# RANGE

## Dimensions [mm]:

Type	Specification	Radius (Ri) [mm]	Nominal Width (N) [mm]												
			300	400	500	600	700	800	900	1000	1100	1200			
CC 080	Max Speed 2.2 m/s	500	300	400	500	600									
	Max unit load 35 kg	600	300	400	500	600	700								
	Max total load 50 kg	800		400	500	600	700	800							
CC 100	Max Speed 3.0 m/s	600		400	500	600	700								
	Max unit load 50 kg	800			500	600	700	800	900						
	Max total load 120 kg	1000						800	900	1000	1100				
		1200						800	900	1000	1100	1200			
CC 125	Max Speed 4.0 m/s	1000							900	1000	1100	1200			
	Max unit load 100 kg	1200							900	1000	1100	1200	1500		
	Max total load 220 kg	1500								1000	1100	1200	1500		

### Technical Data - Type CC 080

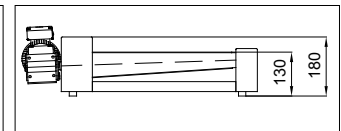
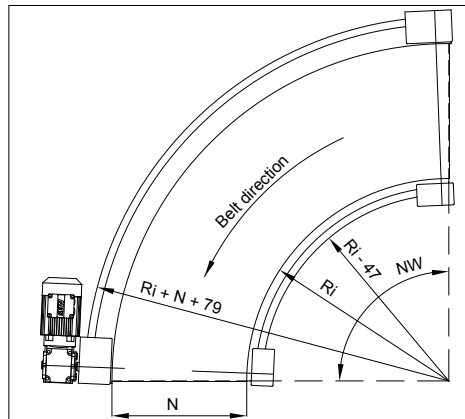
Speed: 0.1 - 2.2 meters/sec  
(Outside radius)

Total load capacity: Max. 50 kg

Weight of Unit load: Max. 35 kg

Diameter of drive and tail pulleys: 80 mm at outside radius

Angles: 45°, 60°, 90°, 135° or 180° plus 30° with Ri 900



### Technical Data - Type CC 100

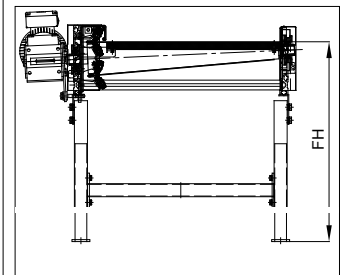
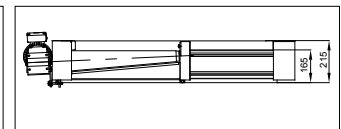
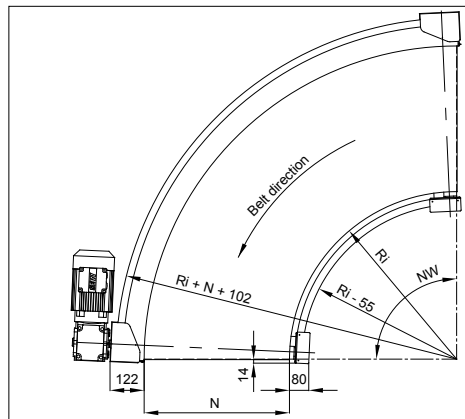
Speed: 0.1 - 3 meters/sec  
(Outside radius)

Total load capacity: Max. 120 kg

Weight of Unit load: Max. 50 kg

Diameter of drive and tail pulleys: 100 mm at outside radius

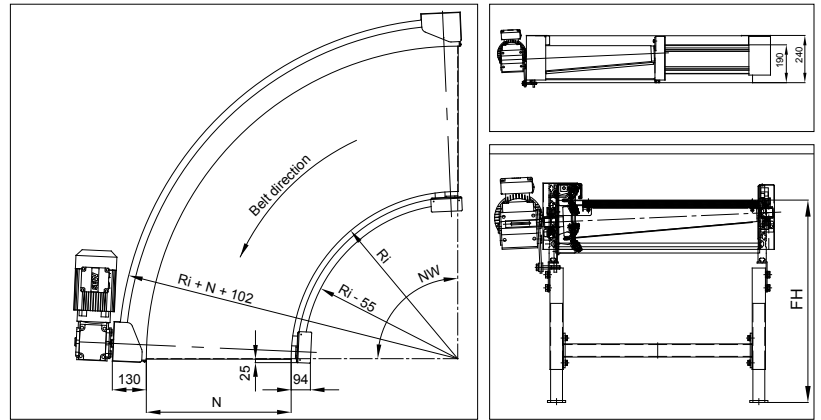
Angles: 45°, 60°, 90°, or 180° plus 30° with Ri 900 - 1200



# RANGE AND OPTIONS

## Technical Data - Type CC 125

Speed:	0.1 - 4 meters/sec (Outside radius)
Total load capacity:	Max. 220 kg
Weight of Unit load:	Max. 100 kg
Diameter of drive and tail pulleys:	120 mm at outside radius
Angles:	30°, 45°, 60°, 90°, or 180°



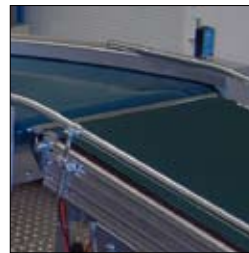
## Options:



### Galvanized Steel Supports

Supports and suspensions are available in various versions. Adjustments can be made so the supports perfectly match individual on-site requirements.

All supports are made of steel tubing with a galvanized steel surface or a painted surface. Height can be adjusted to suit your application.



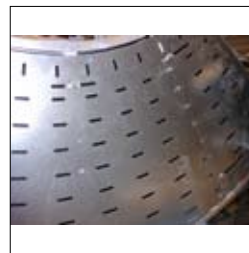
### Transfer Drive

With a transfer drive it is possible to drive two conveyors with one motor. A chain belt is used to connect a drive pulley from one to conveyor to the other. With this option a second drive shaft is needed on the curves drive pulley.



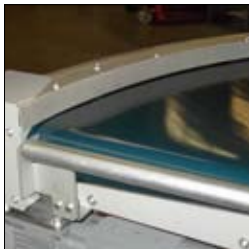
### Side Guides

Side guides are available in different versions. They can be made of sheet steel with a galvanized or painted surface or of tubular metal with a galvanized steel surface. Height and width are adjusted to suit the curve.



### Underguarding

Caljan CurveTracks are designed with covers and finger guards, naturally fitted where appropriate. Available options include steel underguarding placed beneath the curve prevents bodily contact.



### Pop-Out Roller

Available in steel or plastic with diameters of 25 - 50mm. Pop-out rollers are used as a safety device between the curve and a straight roller or belted conveyor.

Injuries between the two conveyors can be avoided as the roller will release with the blocking mechanism is withdrawn.

### Flow Sensor Brackets

To control complete material flow systems, photo sensors are required for most curve conveyors. As the inner and outer profiles of the Caljan CurveTrack has slots, fitting photo sensors is a quick and simple operation. If we are advised of the type of photo sensor and reflector as well as the height at which they should be mounted, we can produce and fit the complete photo sensor bracket during the manufacturing process.



## Description

Ideal for baggage handling in airports, sorting in express package services, distribution centers or mailorder houses, Caljan CurveTrack moves almost any type of unit loads through curves.

Part of a conveyor system, Caljan CurveTrack ensures that the unit is transported in the correct position to the next conveyor.



## Design

Caljan CurveTrack is designed to be fitted on a surface capable of bearing a load of 50 to 220 kg (depending on the model). Alternatively the conveyor can be supplied with factory-fitted, galvanized steel supports. A conical drive fitted at one end of the conveyor is driven by the motor, turning the belt to the right or left as required.

Belt movement is controlled by unique guide bearings fitted in pairs at intervals along the conveyor. The bearings are designed to prevent dirt and debris from impeding or inhibiting their movement.

Beading firmly stitched to the edge of the belt runs between the bearings to ensure that the belt remains in the correct position.

All Caljan CurveTracks can be fitted with an underguard made of a perforated steel plate.



## Technical Data

Conveyor track:	Bolted aluminium, non-welded frame
Conveyor direction:	Clockwise or Counterclockwise
Top of Belt:	Min. 300 mm
Belt:	2-ply polyester fabric, PVC or polyurethane laminated top side
Belt support:	Laminated wood or galvanized steel sheet (optional)
Drive and return rollers:	Conical
Drive position:	Internal or external
Drive performance:	0.37 to 2.2 kW
Electric drive motor:	Shaft-mounted gear motor, spur gear motor
Noise emission:	Less than 70 dB (A), depending on size and type.
Safety features:	Finger protection inserts, finger guards, bearing covers, underguarding, finger protection strip and drive cover.
Options:	Galvanized steel supports, sidewalls, light barriers, lateral guides, frequency control for variable speed.



www.caljanritehite.com

**USA**  
Caljan Rite-Hite Inc.  
3600 E. 45th Avenue  
Denver, CO 80216  
Tel. 800 338 1751  
Tel. 303 321 3600  
Fax 303 321 6767  
www.caljanritehiteus.com

**Denmark**  
Caljan Rite-Hite ApS  
Ved Milepaelen 6-8  
DK-8361 Hasselager  
Aarhus  
Tel. +45 87 38 78 00  
Fax +45 87 38 78 01  
www.caljanritehite.com

**Germany**  
Caljan Rite-Hite GmbH  
Industriestraße 7  
D-65439 Flörsheim  
Tel. +49 6145 93490  
Fax +49 6145 934930  
www.caljanritehite.de

**UK**  
Caljan Rite-Hite Ltd  
Moorbridge Road  
Bingham Industrial Estate  
Nottingham NG13 8GG  
Tel. +44 (0) 1949 838 850  
Fax +44 (0) 1949 836 953  
www.caljanritehite.com

**France**  
Caljan Rite-Hite S.A.R.L.  
8, Rue Georges Besse  
ZAC du Fossé Pâté  
F-78330 Fontenay-le-Fleury  
Tél +33 1 30 07 12 37  
Fax +33 1 30 23 05 69  
www.caljanritehite.fr

**Benelux**  
Caljan Rite-Hite BV  
Engelenburgstraat 57  
7391 AM Twello  
The Netherlands  
Tel. +31 (571) 270 444  
Fax +31 (571) 270 555  
www.caljanritehite.nl